

cpb

Ancien

Firenze,
27 nov 2008

CPB Netherlands Bureau for Economic Policy Analysis

Assessing Needs of Care in European Nations

Seventh Framework Programme

Esther Mot

Beatles

When I'm 64

When I get older losing my hair,
Many years from now,
Will you still be sending me a valentine
Birthday greetings bottle of wine?

If I'd been out till quarter to three
Would you lock the door,
Will you still need me, will you still feed
me,
When I'm sixty-four?

.....

cpb

Ancien

Firenze,
27 nov 2008

The issue

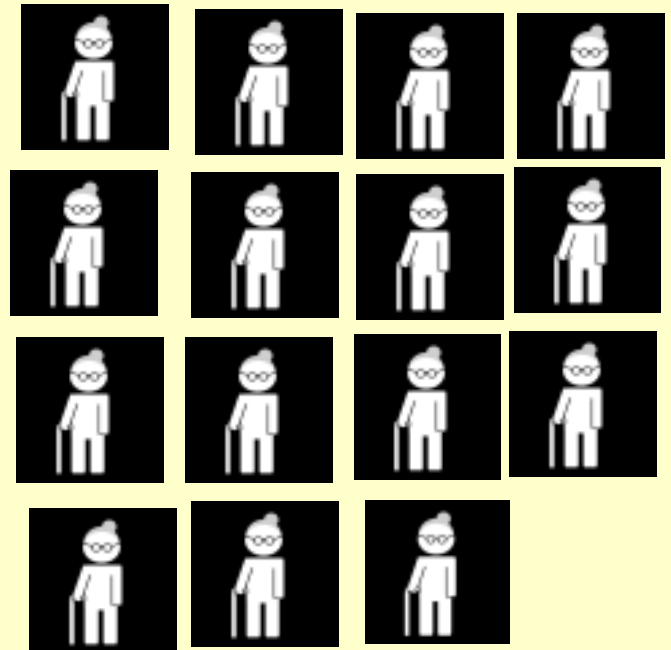
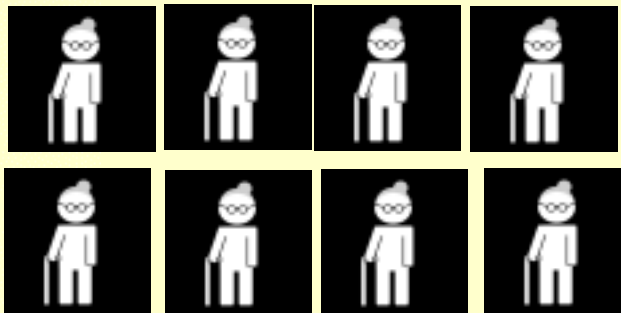
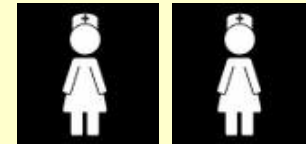
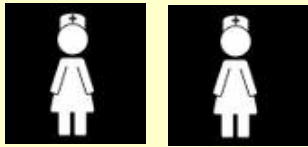


- Demand for care
 - ▶ Ageing of the baby boom
 - ▶ Life expectancy
 - ▶ Life style (smoking cessation, obesity)

- Labour supply

cpb

2008 versus 2040

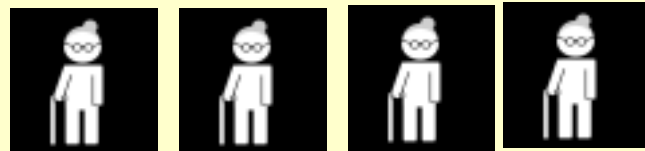
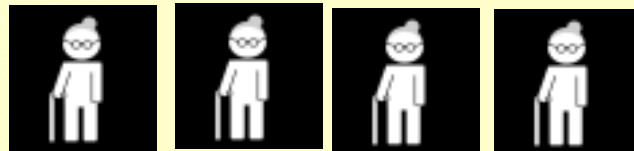
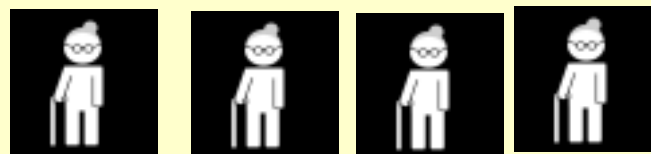
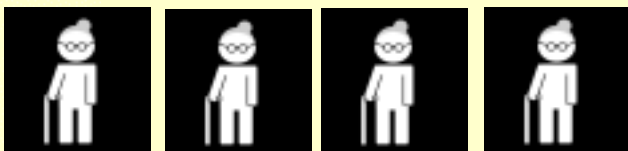
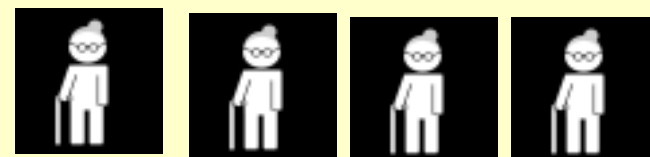
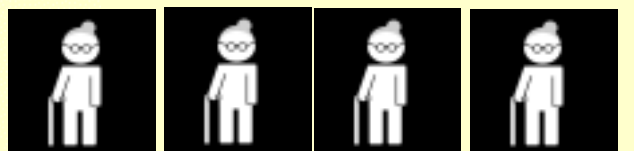
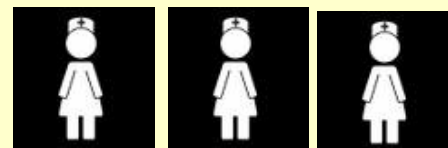
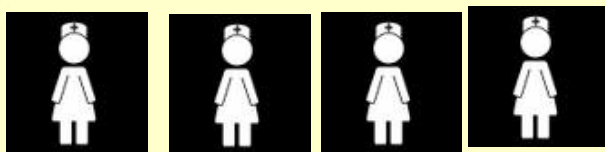


Ancien

Firenze,
27 nov 2008

cpb

2040 after adjustment



Ancien

Firenze,
27 nov 2008

Questions Ancien

- How will need, demand, supply and use of LTC develop?
- How do different systems of LTC perform?

Organisation Ancien

- **Coordination:**
 - ▶ Center for European Policy Studies (CEPS): Güldem Okem

- **Scientific coordination**
 - ▶ Federal Planning bureau (FPB): Peter Willemé
 - ▶ Netherlands Bureau for Economic Policy Analysis (CPB): Esther Mot

- **Consortium:**
 - ▶ 20 partners from 15 eu-countries

Start of the project

- portray LTC-systems in Europe
 - ▶ standardised format
 - ▶ data collection
 - ▶ typologies

- selection of countries to model

Modelling for selected countries

- needs (lifestyle)
- supply (formal and informal)
- use

- projection of LTC needs
 - ▶ demography
 - ▶ risk factors (smoking, obesity)
 - ▶ education
- alternative scenarios
 - ▶ demography only
 - ▶ trends in risk factors
 - ▶ effective intervention policies

- econometric analysis supply of:
 - ▶ informal care
 - ▶ formal care
 - ▶ link with regulation
- choice of care
- burden of caregivers
- labour market implications

- micromodel to explain LTC use
- macroprojections based on micromodel
- policy simulations

Qualitative analysis

- quality of care
 - ▶ review of policies
 - ▶ selection of promising indicators

- role of technology
 - ▶ potential solutions
 - ▶ potential impact on challenges LTC
 - ▶ analysis of feasibility

Final analysis

- **systems performance**
 - ▶ simulations with the models (effect of system on need, supply and use)
 - ▶ consultation of partners
 - ▶ analysis of performance

Practical details

- Start: 1/1/2009 (?)
- Finish: in 2012
- Website:
 - ▶ www.enepri.org

cpb

Ancien

Firenze,
27 nov 2008

The end

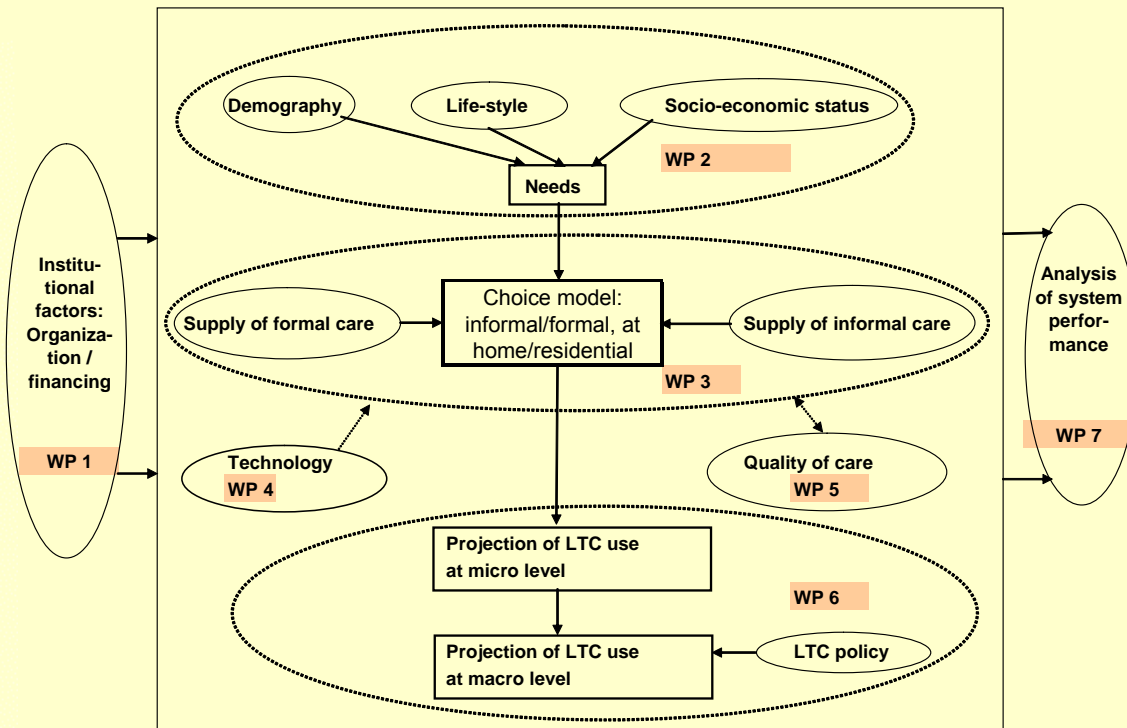


20 partners from:

- Austria
- Belgium
- Estonia
- Finland
- France
- Germany
- Hungary
- Italy
- Netherlands
- Poland
- Slovakia
- Slovenia
- Spain
- Sweden
- United Kingdom

Structure of the project

Conceptual model of LTC needs and use



Dissemination: WP 8

Management and administration: WP 9